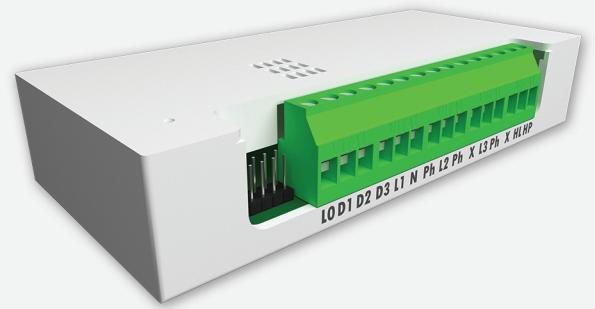




# Lighting Automation

Model No. : 8.0










## Product Specifications

Combination	1 Heavy Load, 3 Dimmable Load, 4 Regular Load
Module Size	None
Mode of Operation	Physical, Voice, Mobile App
Material	ABS
Color	White
Product Dimensions	128 x 58 x 25 mm
Dimensions with Packaging	163 x 94 x 48 mm
Product Weight	187 gms
Weight with packaging	258 gms
Operating Voltage	110V-240V AC
Operating Temperature	0-65°C (Non Condense)
Shock Proof	No
Water Resistance	No
Warranty	3 Years

## Features

Enjoy one-touch control of everyday life. Here are just a few of the many ways you can use Smart Home can help you on a daily basis.

-  **Scene Control**
-  **Child Lock**
-  **Guest Lock**
-  **Schedule**
-  **Subuser**
-  **History**
-  **Geofencing**