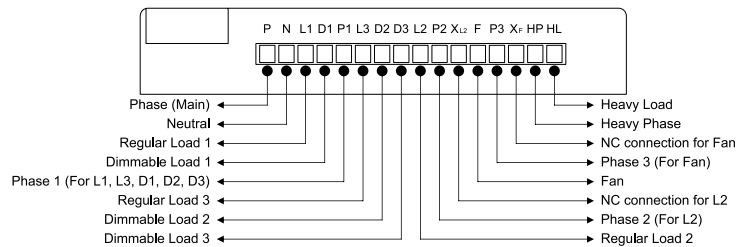
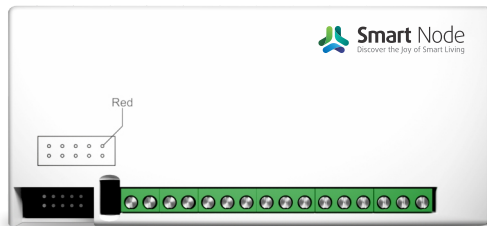


## Smart Device

Model No. : SD.8FDNH



Wiring diagram

### Objectives

Voice control, Mood-based scene settings, Appliance scheduling, and Geo-location based control.

### What it controls

Light, Fan, AC, Geyser, Dimming light, Fridge, Washing machine, Microwave, TV, etc.

### Technical Attributes

Combination	1 Humming free fan 3 Dimmable load 3 Normal load 1 Heavy load
Operating input voltage	100 -240 VAC.
Supported frequency	50-60 Hz
Communication protocol	Wi-Fi 2.4 GHz 802.11 b/g/n
Product weight (gms)	200
Mode of operation	Physical, Voice, Mobile app
Max.load (fan)	100 watt
Max.load (per dimmer, up to 3 LED)	100 watt
Max.load (per normal load switch, up to 3 LED)	1500 watt
Max.load (per high load switch, up to 4 LED)	2500 watt
Wi-Fi signal strength min.	>50 %
Min.internet speed required	512 Kbps
Data consumption	< 3mb/month
Operating temperature	0°C - 65°C non condense
Product size	130mm x 60mm x 25mm
Module size (product size)	6
Material	ABS
Shockproof	No
Water resistance	No

### Features



Humming less fan dimming



5 step fan control



0%-100% brightness dimming



Smooth dimming



Internet independent scheduling



Anti-shock switching



2-way fan



Compatible with traditional switches and capacitive switches



OTA update support



Hassle free installation