

## TOUCH REMOTE

TR.1



---

### Quick Links

---

[Product Overview](#)

[Remote Layout](#)

[Remote Operation](#)

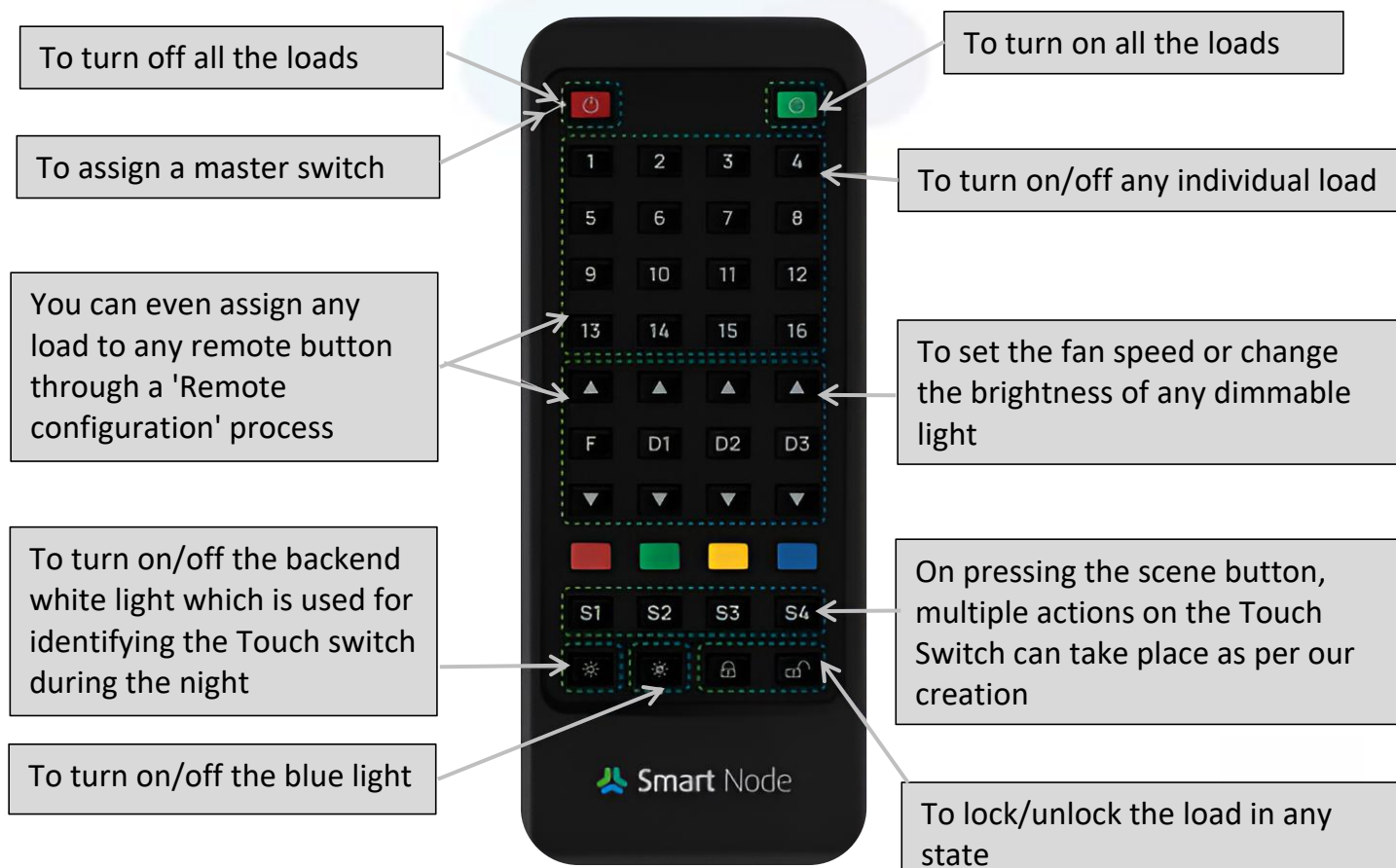
## Product Description

### Product Overview:-

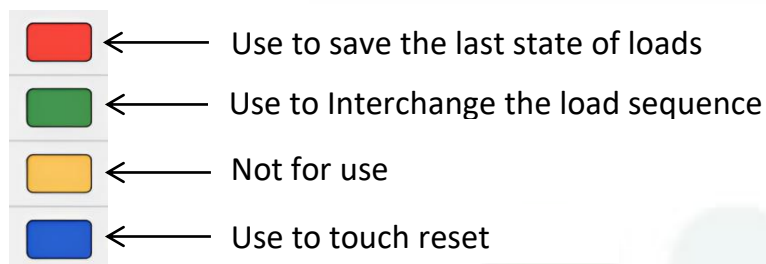
**Model Number:** TR.1

**Description:** Remote control in home automation allows users to manage and operate various systems through a single, unified interface. It provides the flexibility to control lighting, curtains, and security systems from a centralized device, offering greater convenience and efficiency in everyday use. Smart Devices and Remote Devices both can operate using our IR Remote. The remote provided is universal.

### Remote Layout



## Remote Operations



### To save the last state of loads:-

#### Steps:

1. **Press and hold** the red button (upto 10s - 15s) until touch starts blinking, a beep sound will indicate successful configuration.

### To interchange the load sequence:-

#### Steps:

1. **Press and hold** the green button (upto 10s - 15s) until touch starts blinking.
2. On the remote, press the buttons in the following sequence: 1, 5, 3, 4, 2, 6, 7, 8

**Note:** In this sequence, buttons 2 and 5 are intentionally interchanged:

- The 2nd load on the touch panel will be controlled by button 5 on the remote.
- The 5th load will be controlled by button 2.

### To reset the touch:-

#### Steps:

1. **Press and hold** the blue button (upto 10s - 15s) until touch starts blinking, a beep sound confirms the device has been successfully reset.

## Master Switch Functionality on Touch panel:-

### Steps:

1. **Press and hold** the specific button (upto 10s - 15s) on the touch panel that you want to set as the Master Switch, until it starts blinking.
2. Then, press the **Master button** on the remote.
3. Once assigned:
  - **First Press:** Turns off all loads.
  - **Second Press:** Restores all loads to their previous states.

## Scene Creation with remote:-

A maximum of four scenes can be created with the specific device loads only. Scenes can be configured directly on the device using the remote.

### Steps:

1. **Press and hold the S1 button** until the panel starts blinking to indicate scene mode activation.
2. **Once the panel starts blinking**, press the desired combination of switches on the touch panel to include them in the scene.
3. **After configuring the scene**, release the S1 button to save the scene.